



## Application description

English

### SafePLC2 – ESI Import Profile Management

**Note:**

The english version is the original version of the application description .

Status: 03/2021

Valid Versions:

SafePLC version: 1.7.1.8130

**Table of Content**

- 1 General..... 4**
  - 1.1 Target ..... 4
- 2 Import ESI..... 4**
  - 2.1 New FSoE Slave ..... 5
  - 2.2 Add profile to an existing FSoE Slave ..... 7
- 3 Profile Management ..... 9**

## 1 General

### 1.1 Target

Description of “Import ESI” and “Profile Management” in SafePLC2.

## 2 Import ESI

Import ESI can be accessed from the Main Menu.

Clicking on “Import ESI” opens a dialog window for user to manage importing ESI file into SafePLC2 in form of Profiles or FSoE Slaves with Profiles.

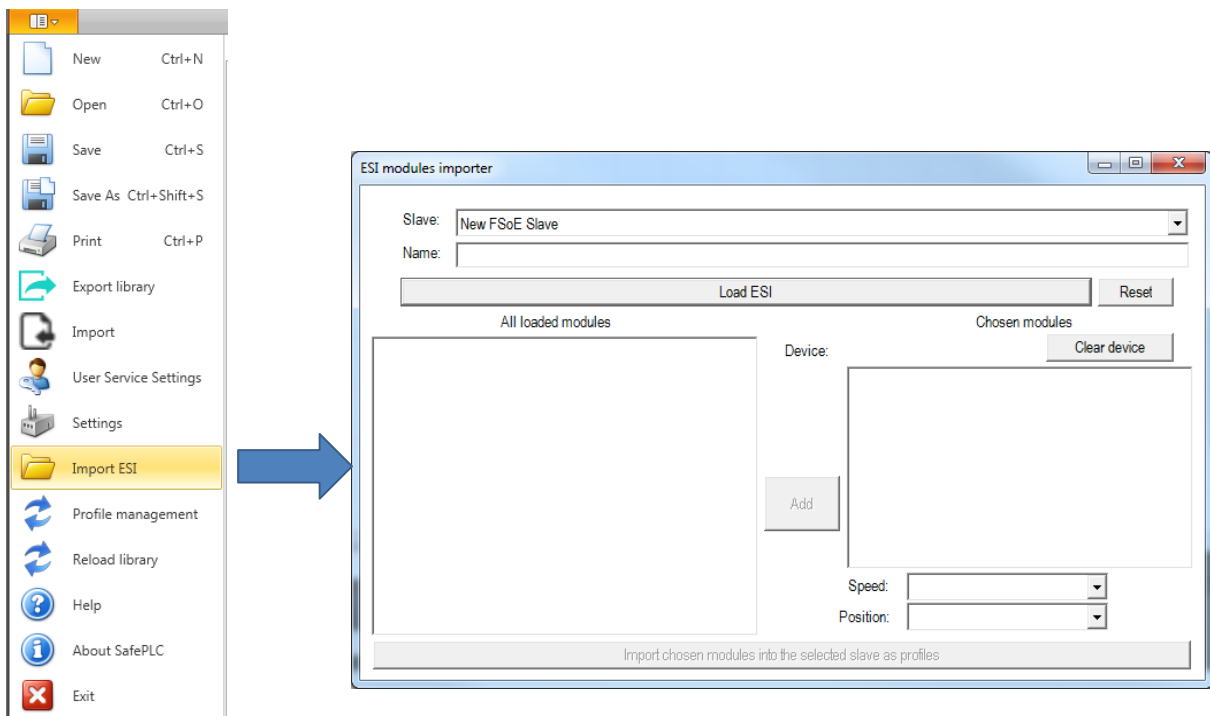


Figure 1 Main menu, “Import ESI” opens dialog window „ESI modules importer“

First the user chooses an option in “Slave” field. The “New FSoE Slave” is chosen in case, when user wants to generate completely new FSoE Slave, which will be available after Import is done.

The other options in Slave dropdown field are already existing FSoE Slaves included in the SafePLC2 libraries.

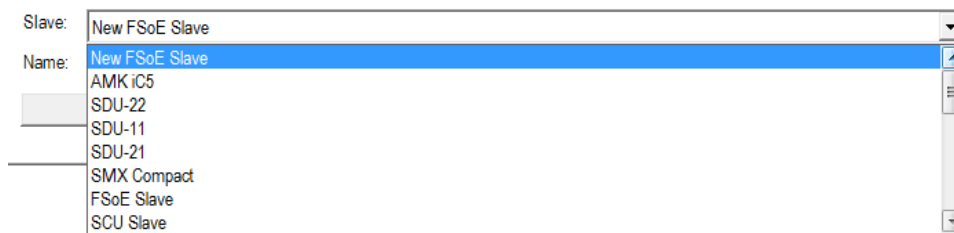


Figure 2 "Slave" field open, selection option: "New FSoE slave" or an existing "FSoE slave"

## 2.1 New FSoE Slave

When importing New FSoE Slave, user has to fill Name text field. This will be name of the imported FSoE Slave.

Then clicking on Load ESI will prompt user to choose which ESI file he wants to import as a new FSoE Slave.

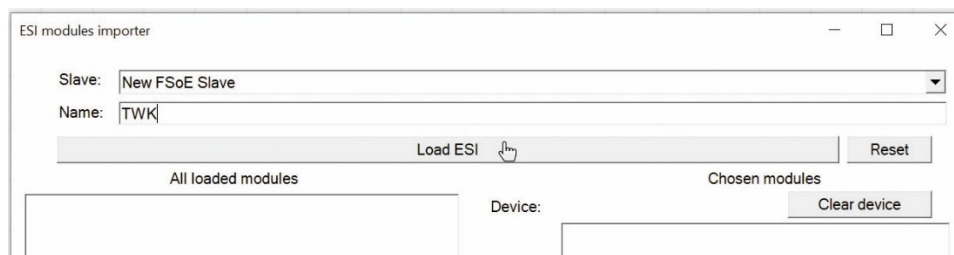


Figure 3 Load new FSoE slave

After selecting an ESI file, its modules are loaded in "All loaded modules" list. Initially, all loaded modules are also included in "Chosen modules" list. There the user can remove modules which he doesn't want to be included in the new FSoE slave as profiles. Clicking on one of the modules (or selecting more by holding Shift key) and clicking on the button "Delete" in the center of the dialog window will remove selected modules.

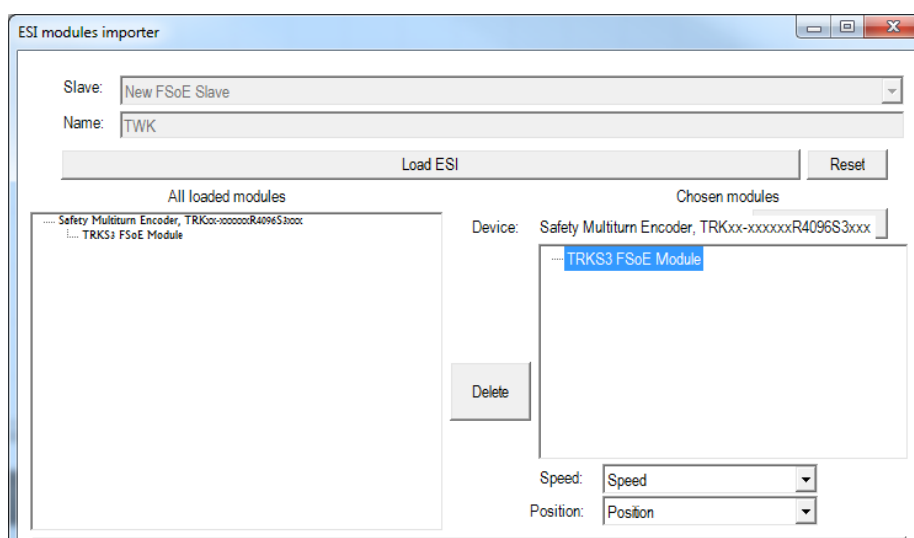


Figure 4 selcted modules which want to be included in the new FSoE slave as profiles

Under “Chosen modules”, there is an option to choose, which TxPDO entry from the ESI file will be considered as “Speed” or “Position” in the imported Profile. Only non-BOOL entries are listed in the dropdown lists.

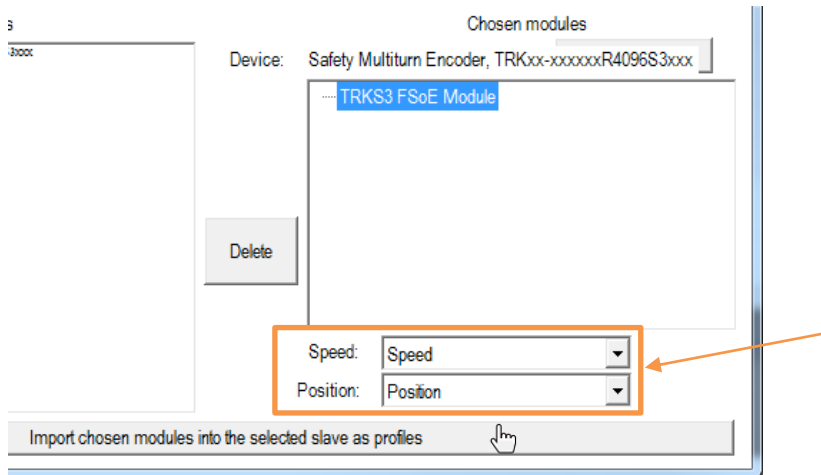


Figure 5 Selection of “Speed” or “position” of TxPDO in the imported profile

When all is set as desired, clicking on “Import chosen modules into the selected slave as profiles” will generate libraries so the new FSoE slave will be available.

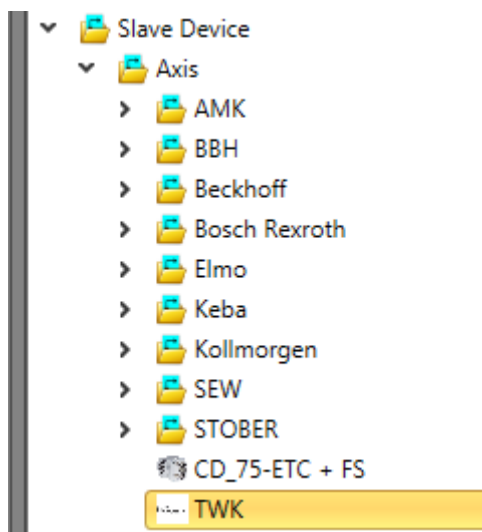


Figure 6 New FSoE Slave profile in library window

In order to see the new FSoE slave in library window, reload library or restarting the SafePLC2 is required.

## 2.2 Add profile to an existing FSoE Slave

First the user selects the FSoE slave, to which the Profile will be imported.

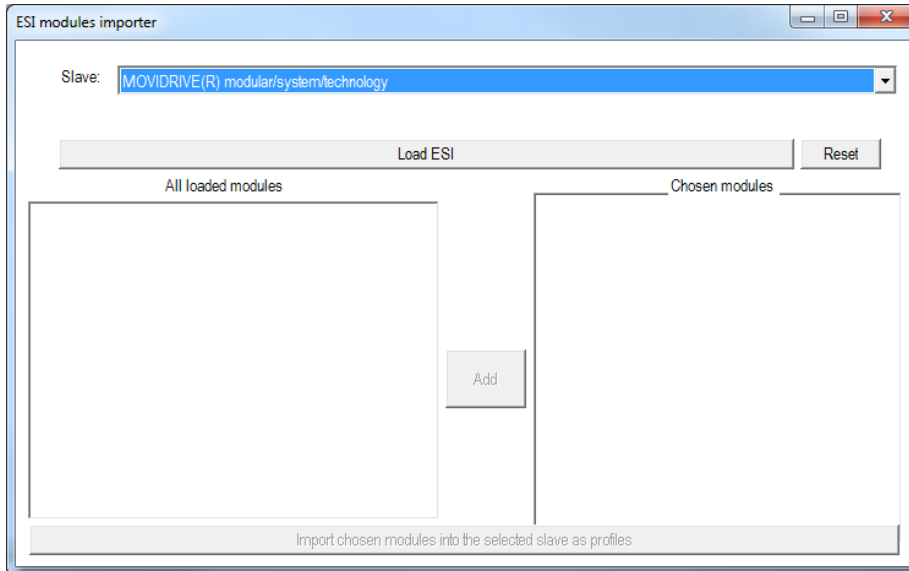


Figure 7 Select FSoE Slave

Then analogically choosing ESI file with “Load ESI” will list modules in lists below. Those modules which are in “Chosen modules” will be imported to the selected FSoE Slave.

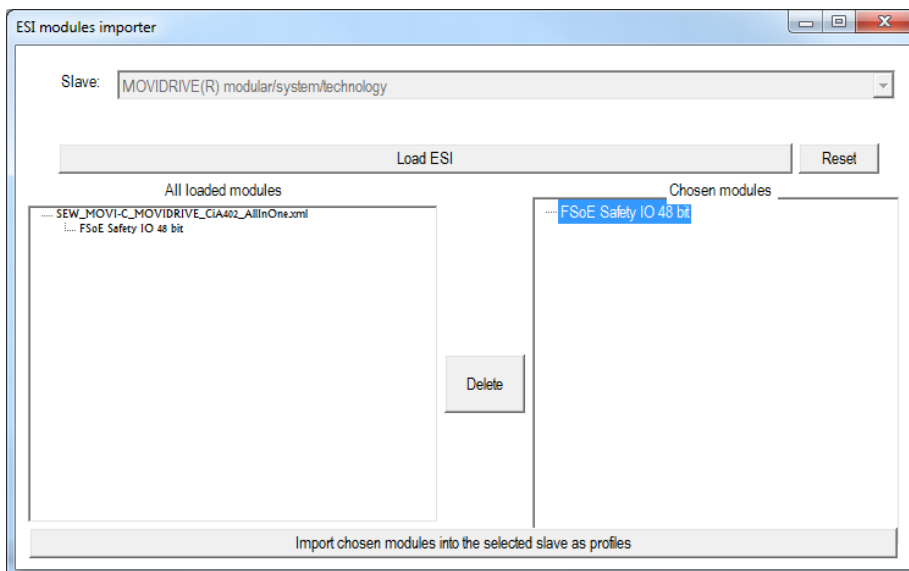


Figure 8 Listed modules after clicking “Load ESI”

After reloading libraries or restarting the SafePLC2, the new Profiles are available.

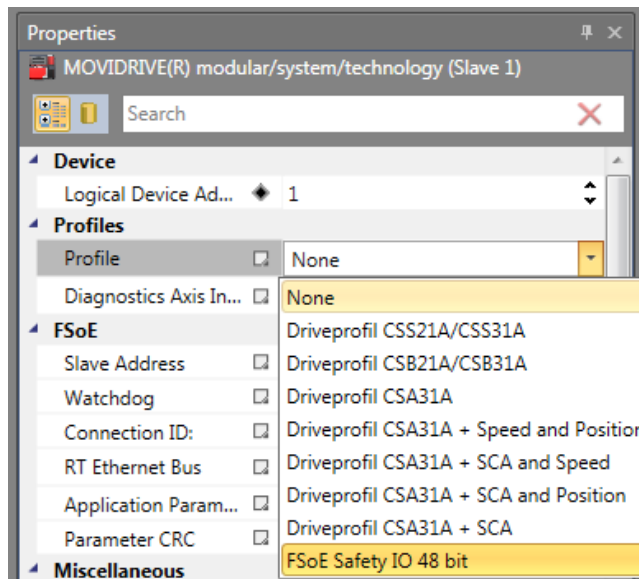


Figure 9 Properties, New Profiles now included



### 3 Profile Management

Profile Management tool is accessed from Main Menu.

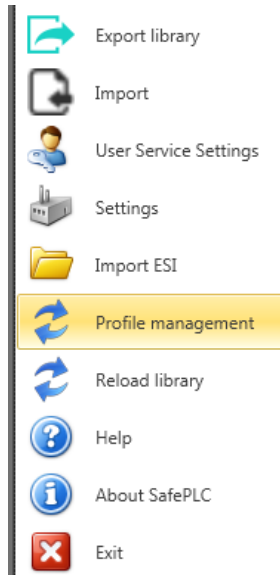


Figure 10 Main menu, open „profile management“

In the Profile Management user can remove or rename existing Profiles of the FSoE Slaves.

First the user has to select which Slave's Profiles he wants to update. This is done with dropdown list "Slave:".

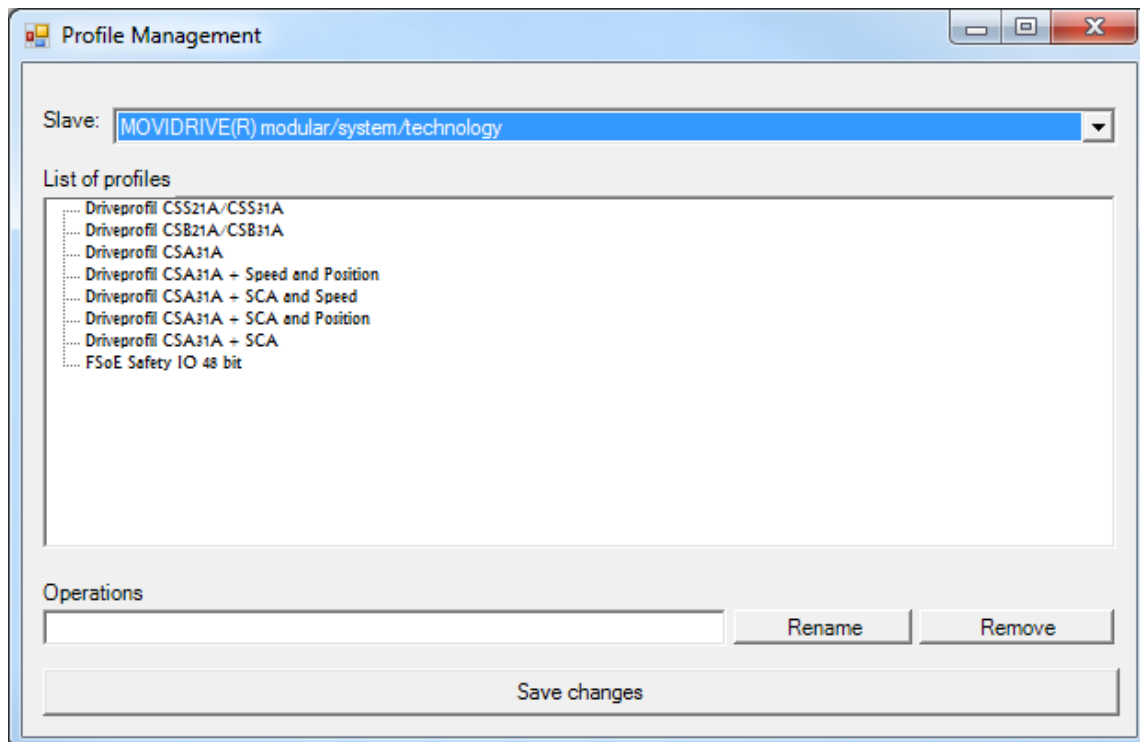


Figure 11 Profile Management window

Clicking on one of the profile in “List of profiles” will make focus on it. Then in bottom part of the window, the user can rename the profile by modifying its name and clicking on “Rename”. Clicking on “Remove” deletes the profile and it will not be available to use in the SafePLC2.

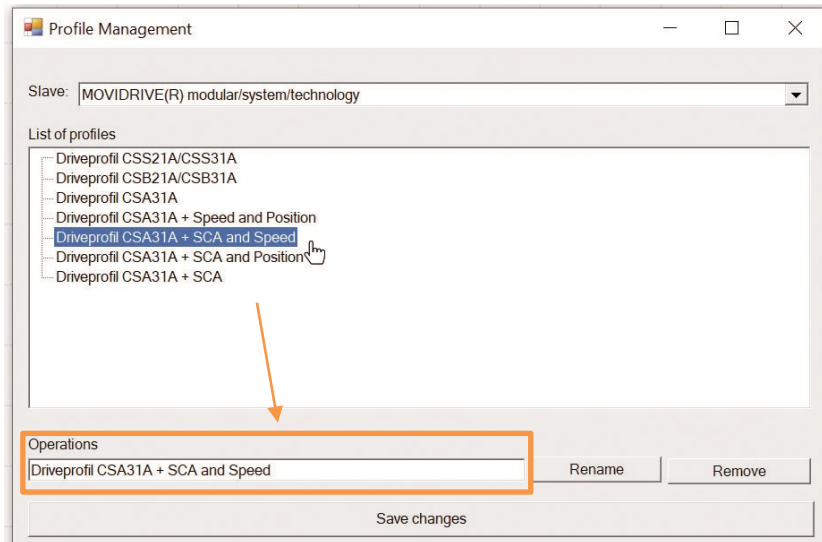


Figure 12 Select profile

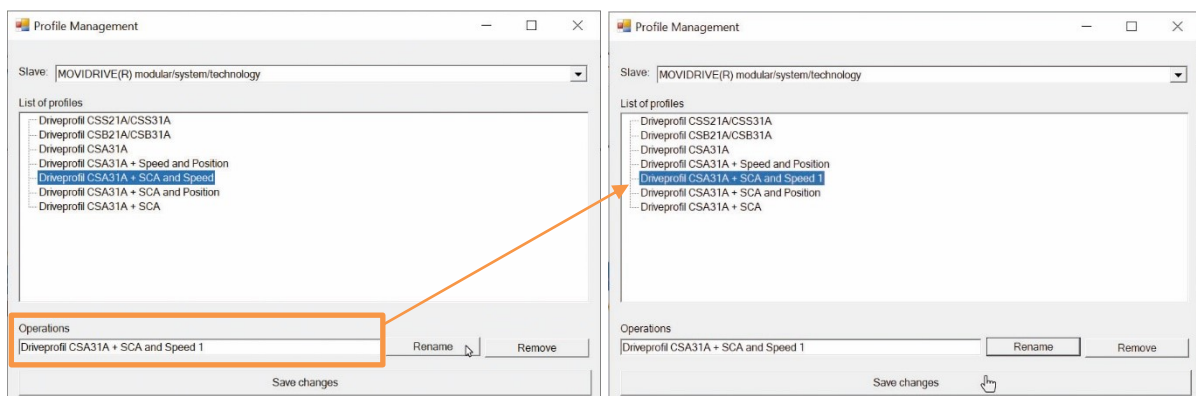


Figure 13 After clicking on “rename” the new name appears in the profile list.

After all modifications are finished, the user can click on “Save changes” to apply the changes he made.